

ADDITIONAL FLEXIBLE HEART PROBE

PT-2-CFS-V, PT-2-CFS-H &
PT-2-CFS-V-200

PROVIDES MORE CONTROL OVER
PROCESSES PERFORMED INSIDE THE
AUTOCLAVE

ACCESSORIES



Additional flexible heart probe



APPLICATION

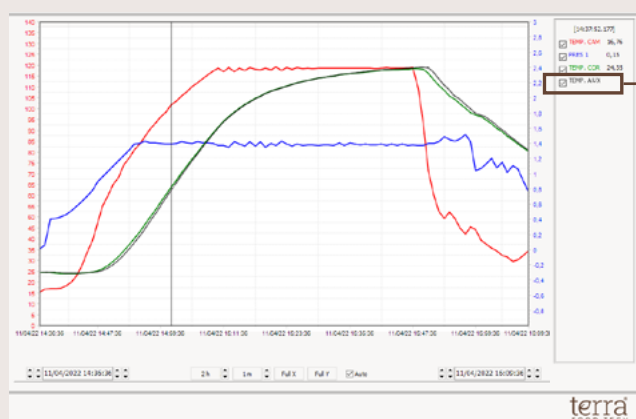
- + TESTS THAT EVALUATE THE IMPACT OF USING DIFFERENT PACKAGING FORMATS REGARDING ACHIEVED F_0/P_0 VALUES.
- + BETTER QUALITY CONTROL OF EACH THERMAL PROCESS.

Characteristics

- Particularly recommended for research environments.
- Enables the recording and further analysis of the evolution of temperature inside two independent samples.
- The second heart probe has the same technical specifications as the main heart probe.
- In thermal processes governed by F_0/P_0 values, the cooler sample will control the evolution of the cycle.
- The second heart probe acts as a quality control element and, in case of significant differences between heart probes, an error message will be shown on the display, tickets and software.
- Three models of additional flexible heart probe:
 - **PT-2-CFS-H:** Compatible with CFS-H Series benchtop autoclaves. It has a length of 60 mm, the same as the standard probe included with these models.
 - **PT-2-CFS-V:** Compatible with CFS-V Series vertical autoclaves. It has a length of 120 mm, the same as the standard probe included with these models.
 - **PT-2-CFS-V-200:** Compatible with CFS-V Series vertical autoclaves. Its length is 200 mm.



Visualization of additional heart probe on SWTERRA software display



Additional heart probe temperature

Additional flexible heart probe

Important aspects to take into account:

- The adjustment of each temperature probe offset is made from the autoclave's microprocessor. Specialized and authorized personnel are required to perform this task. If you need more information regarding this topic, please contact our technical service department.
- It is necessary to use SWTERRA software in order to analyze the results obtained by the second heart probe. These results do not appear on the autoclave display, nor on the printer tickets.
- It must be factory installed.



A graphic promoting the company's YouTube channel. It features a tablet displaying the YouTube channel page, a hand cursor icon pointing at the screen, and a dark brown speech bubble with the text "CLICK! VISIT OUR CHANNEL". A small black box with "+ info" is in the top left corner.

+ info

**CLICK!
VISIT OUR
CHANNEL**

Find out more information about our autoclaves on our Youtube

